

# HUGE NATIONWIDE ABSOLUTE AUCTION

NO RESERVES • NO MINIMUM BIDS

**Savage, Maryland  
Distribution Center  
8704 Bollman Place  
Tuesday, April 29th • 10:00 A.M.**



Preview: Monday, April 28th • 9:00 A.M. to 4:00 P.M.

**350+ Late Model Well Maintained Highway Tractors,  
Straight Trucks & Reefer Trailers**

**(2) Fully Equipped Distribution Centers**



**ADDITIONAL AUCTION SALES OF TRUCKS, TRAILERS & STRAIGHT  
TRUCKS IN CALIFORNIA, COLORADO, MICHIGAN & TEXAS**

**Thursday, May 1st–Friday, May 9th**

(See individual listings for exact dates, locations & times)

**CAPITAL  
RECOVERY  
GROUP, LLC**

Auction Specialists • Appraisal Experts • Online or Onsite

1654 King Street, Enfield, Connecticut 06082  
(860) 623-9060 • (800) 300-6852 • Fax: (860) 623-9160

**E-mail: [info@crgauction.com](mailto:info@crgauction.com)**



**RABIN**

WORLDWIDE

298 San Bruno Avenue

San Francisco, California 94103

Tel: 1 (800) 421-2144 or (415) 522-5700

Fax: (415) 522-5701

**e-mail: [details@rabin.com](mailto:details@rabin.com)**

**[www.rabin.com](http://www.rabin.com)**

**ABSOLUTE AUCTION • NO RESERVES • EVERYTHING SELLS TO HIGHEST BIDDER**

# 350+ Late Model Well Maintained Highway



**Savage, Maryland Distribution Center**  
**8704 Bollman Place**  
**Tuesday, April 29th • 10:00 A.M.**

Preview: Monday, April 28th • 9:00 A.M. to 4:00 P.M.

## TRACTORS

(5) **1998 FREIGHTLINER Mdl. FLD12064ST T/A Day Cabs**, w/Detroit Diesel Series 60 12.7L 408 hp. engines, Eaton Fuller 10-spd. trans., 40,000-lb. rears with Air Ride, Jake brake, sliding 5th-wheel, Tripmaster Datatrax Series II GPS, 11R22.5 tires on steel wheels, twin 150-gal. aluminum tanks, single-chrome stack, exterior visor, with aluminum deck plates.

(4) **1997 VOLVO Mdl. WG42T S/A Day Cabs**, w/Cummins M11 280 hp. engines, Eaton Fuller Super 10-spd. trans., 23,000-lb. rears with Air Ride, cruise control, sliding 5th-wheel, Tripmaster Datatrax Series II GPS, 11R22.5 tires on steel wheels, twin 100-gal. steel tanks, single stack with aluminum deck plate.

(3) **1997 FREIGHTLINER Mdl. FLD12064ST TA 36" Sleepers**, w/Detroit Diesel Series 60 12.7L 495 hp. engines, Eaton Fuller 9-spd. LL trans., 40,000-lb. rears with Air Ride, Jake brake, sliding 5th-wheel, Tripmaster Datatrax Series II GPS, 11R22.5 tires on steel wheels, twin 150-gal. aluminum tanks, single-chrome stack, exterior visor, with aluminum deck plates.

(48) **1997 and (5) 1996 VOLVO Mdl. WG64T T/A Day Cabs**, w/Detroit Diesel Series 60 11.1L 330 hp. engines, Eaton Fuller Road Ranger 9-spd. trans., 38,000-lb. rears with Air Ride, engine brake, sliding 5th-wheel, Tripmaster Datatrax Series II GPS, 11R22.5 tires on steel wheels, twin 100-gal. steel tanks, single-stack with aluminum deck plate.

(3) **1996 FREIGHTLINER Mdl. FLD12064ST T/A 36" Sleepers**, w/Detroit Diesel Series 60 12.7L 408 hp. engines, Eaton Fuller 9-spd. LL trans., 40,000-lb. rears with Air Ride, Jake brake, sliding 5th-wheel, Tripmaster Datatrax Series II GPS, 11R22.5 tires on steel wheels, twin 150-gal. aluminum tanks, single chrome stack, exterior visor, w/aluminum deck plates.

(3) **1996 FREIGHTLINER Mdl. FLD12064ST T/A Day Cabs**, w/Detroit Diesel Series 60 11.1L 402 hp. engines, Eaton Fuller 10-spd. trans., 40,000-lb. rears with Air Ride, Jake brake, sliding 5th-wheel, Tripmaster Datatrax Series II GPS, 11R22.5 tires on steel wheels, twin 150-gal. aluminum tanks, single-chrome stack, exterior visor, with aluminum deck plates.



**1997 FREIGHTLINER  
 FLD12064ST  
 SLEEPER CAB**



**FREIGHTLINER  
 INTERIOR**

## STRAIGHT TRUCKS

(2) **2002 INTERNATIONAL Mdl. THKTS500-30**, w/DT466 C230 7.6L 230 hp. engines, Eaton Fuller 6-spd. transmissions, 33,000-lb. GVWR, Tripmaster Datatrax Series II GPS, 11R22.5 tires on steel wheels, twin 55-gal. steel tanks, cruise control, ABS, single chrome stack, with 24' Morgan aluminum body, Thermo-King TS-500 reefer unit with remote display, and 5,000-lb. hydraulic rail gates, **less than 35,000 miles on the odometer.**

**2001 INTERNATIONAL 4900**, w/DT466 C230 7.6L 230 hp. engines, Eaton Fuller 6-spd. trans., 33,000-lb. GVWR, Tripmaster Datatrax Series II GPS, 11R22.5 tires on steel wheels, twin 55-gal. steel tanks, cruise control, ABS, single chrome stack, with 24' Morgan aluminum body, Thermo King TS-500 reefer unit with remote display, and 5,000-lb. hydraulic rail gate, **less than 35,000 miles on the odometer.**

(2) **1997 FREIGHTLINER FL80**, w/5.9L 210 hp. engines, Eaton Fuller 6-spd. trans., 35,000-lb. GVWR, Tripmaster Datatrax Series II GPS, 11R22.5 tires on steel wheels, twin 55-gal. steel tanks, cruise control, ABS, single stack, with 24' Morgan aluminum body, Thermo King KD-II reefer unit with remote display, and Maxon 5,500-lb. hydraulic rail gates and curbside swing door.



**2001 INTERNATIONAL  
 STRAIGHT TRUCK**



**1996 FREIGHTLINER TANDEM-AXLE DAY CAB**



**VOLVO TANDEM-AXLE DAY CAB**



**1997 FREIGHTLINER FL80 STRAIGHT TRUCK**



**1997 VOLVO SINGLE-AXLE**

# Tractors, Straight Trucks & Reefer Trailers

## REEFER TRAILERS

(10) **2002 UTILITY VS2R 48' T/As**, 65,000-lb. GVWR, 102"W x 13'6"H, spring suspension, Kemplite lined, 11R22.5 tires on steel wheels, Maxon 5,500-lb. hydraulic rail gate, with Thermo King SB III DE-SR Whisper Edition reefer unit, 2,500 avg. hrs., 35,000 avg. miles.

(4) **2001 UTILITY VS2R 40' T/As**, 65,000-lb. GVWR, 102"W x 13'6"H, spring suspension, Kemplite lined, 11R22.5 tires on steel wheels, Maxon 5,500-lb. hydraulic rail gate, with Thermo King SB III DE reefer unit.

(4) **2001 UTILITY VS1R 28' S/As**, 37,000-lb. GVWR, 96"W x 12'6"H, spring suspension, Kemplite lined, 11R22.5 tires on steel wheels, Maxon 5,500-lb. hydraulic rail gate, with Thermo King SB III DE reefer unit.

(4) **2000 UTILITY VS2R 40' T/As**, 65,000-lb. GVWR, 102"W x 13'6"H, spring suspension, Kemplite lined, 11R22.5 tires on steel wheels, Maxon 5,500-lb. hydraulic rail gate, with Thermo King SB III reefer unit.

(8) **2000 TRAILMOBILE 46' T/As**, 65,000-lb. GVWR, 102"W x 13'6"H, spring suspension, Kemplite lined, 11R22.5 tires on steel wheels, Leyman 4,500-lb. hydraulic rail gate, with Thermo King SB III DE reefer unit.

(15) **1997 and (19) 1996 TRAILMOBILE 48' T/As**, 65,000-lb. GVWR, 102"W x 13'6"H, spring suspension, Kemplite lined, 11R22.5 tires on steel wheels, Maxon 5,500-lb. hydraulic rail gate, with Thermo King SB III DE reefer unit.

(4) **1997 UTILITY VS2R 48' T/As**, 65,000-lb. GVWR, 102"W x 13'6"H, spring suspension, Kemplite lined, 11R22.5 tires on steel wheels, Maxon 5,500-lb. hydraulic rail gate, with Thermo King SB III DE reefer unit.

(4) **1997 UTILITY VS2R 48' T/As**, 65,000-lb. GVWR, 96"W x 12'6"H, spring suspension, Kemplite lined, 11R22.5 tires on steel wheels, Maxon 5,500-lb. hydraulic rail gate, with Thermo King SB III DE reefer unit.

**1997 UTILITY VS2R 45' T/A**, 65,000-lb. GVWR, 96"W x 12'6"H, spring suspension, Kemplite lined, 11R22.5 tires on steel wheels, Maxon 5,500-lb. hydraulic rail gate, with Carrier Phoenix Ultra Fresh reefer unit.

**1997 TRAILMOBILE 45' T/A**, 65,000-lb. GVWR, 102"W x 13'6"H, spring suspension, Kemplite lined, 11R22.5 tires on steel wheels, Leyman 4,500-lb. hydraulic rail gate, with Carrier Phoenix Ultra Fresh reefer unit.

(13) **1997 TRAILMOBILE 42' T/As**, 65,000-lb. GVWR, 102"W x 13'6"H, spring suspension, Kemplite lined, 11R22.5 tires on steel wheels, Leyman 4,500-lb. hydraulic rail gate, with Carrier Phoenix Ultra Fresh reefer unit.

(7) **1997 UTILITY VS1R 28' S/As**, 37,000-lb. GVWR, 96"W x 12'6"H, spring suspension, Kemplite lined, 11R22.5 tires on steel wheels, Maxon 5,500-lb. hydraulic rail gate, with Thermo King SB III DE reefer unit.

(4) **1997 TRAILMOBILE 28' S/As**, 37,000-lb. GVWR, 96"W x 12'6"H, spring suspension, Kemplite lined, 11R22.5 tires on steel wheels, Leyman 4,500-lb. hydraulic rail gate, with Thermo King SB III DE reefer unit.

(5) **1997 KIDRON 28' S/As**, 37,000-lb. GVWR, 96"W x 12'6"H, spring suspension, Kemplite lined, 11R22.5 tires on steel wheels, Leyman 4,500-lb. hydraulic rail gate, with Carrier Phoenix Ultra Fresh reefer unit.

(47) **1994-1996 Assorted TRAILMOBILE and UTILITY 40'-46' Trailers**, w/Carrier Ultra Fresh or Thermo King SB II reefer units and hydraulic rail gates.



**1996 UTILITY SINGLE-AXLE w/CARRIER REEFER**



**1997 UTILITY 42' REEFER**



**1997 UTILITY VS1R 28' REEFER**



**2001 UTILITY 48' REEFER**

**Preview:  
Monday  
April 28th  
9:00 A.M.  
to 4:00 P.M.**



**2001 UTILITY SINGLE-AXLE REEFER**



**45' UTILITY w/CARRIER REEFER**



**TRAILER INTERIOR**

**For more information, log on to [www.crgauction.com](http://www.crgauction.com) or [www.rabin.com](http://www.rabin.com)**

## FORK TRUCKS & ELECTRIC PALLET JACKS

1997 RAYMOND Mdl. 640-C40TT Stand-Up Electric Forklift, 251" mast, 4,000-lb. cap., w/sideshift.

(2) RAYMOND Mdl. EAS-I Stand-Up Electric High-Reach Lift Trucks, 315" mast, 3,000-lb. cap.

(3) 1990 RAYMOND Mdl. 31-S-DR30TT Stand-Up Electric High Lift Trucks, 300" mast, 3,000-lb. cap.

(7) 1985-1987 RAYMOND Mdl. 31-S-DR30TT Stand-Up Electric High-Reach Lift Trucks, 300" mast, 3,000-lb. cap.

(8) CROWN Mdl. 60PE-6 6,000-Lb. Double-Pallet Jacks.

(7) BAKER 6,000-Lb. Single-Pallet Jacks.

(15) TAYLOR DUNN E4-51 Electric 3-Wheel Bulk Train Tugs.

## WAREHOUSE EQUIPMENT

CUMMINS 1250 KVA AC Diesel Backup Generator, pad-mounted, 16-cylinder, 549 hours.

AMERICAN LINCOLN ATS Mdl. 46/53 Floor Scrubber, w/ROPS.

(1,300+) 28" x 44" x 62" Folding Aluminum Provisions Carts.

(10) TRIPMASTER Datatrac Series II GPS Trip Recorders, in cases.

(14) BLUE GIANT and CROWN 5,000-Lb. Hydraulic Pallet Jacks.

(5) INSULATOR 2' x 3' x 66" Portable Insulated Shipping Containers.

Large Assortment of Insulated Trailer Dividers, Plastic Butterfly Top Totes.

New Warehouse Lights Including: GE 400-Watt Quartz Lights, w/reflectors; and WIDE-LITE H33/M59 Outdoor 400-Watt Quartz Flood Lights.

New Pallet and Case Lots Including: (30+) Full Pallets of 16" x 2000' Rolls of Hand Stretch Pallet Wrap; Cases of 51" x 49" x 85" Plastic Covers; Full Pallet Loads of Food Service Single-Use Poly Gloves; Long-Handle Scrub Brushes; Mop Handles; Dust Mop Refills; (225+) Full Cases of Xerox Copier and Bright White Printer Paper; (65) Cases of Legal Size Paper; Case Lots of Green Bar and Multicopy Tractor Feed Computer Paper; and More.

Good Quantity of 2-Wheel MAGLINER Handtrucks; Dock Plates; Break Room Furniture; Microwaves, Refrigerator and Related.

## IT & COMMUNICATIONS EQUIPMENT

IBM AS400E Series 7XX Server, w/(1) GB RAM, (21) GB DASD, tape drive, internal MLR1 drive, CD drive, 400 Ver. 4 Rel. 4 OS, under IBM warranty and maintenance.

NORTEL Meridian 3 Chassis Digital Telephone System, w/(8) universal trunk cards, (2) analog M/WLC cards, (9) digital LC cards, system core card, 1.5 MB DTI/PRI card, (2) SDI/DCH cards, battery backup, Poll-Safe call record buffer, Interlalia digital voice announcer, (80+) handsets and administration centers.

BALTIMORE ENGINEERING 8-Channel Yard and Warehouse PA and Paging System, in rack-mount cabinet, including (4) Crown Mdl. CE1000 power amps, 450-W/ch, (2) Altec Lansing 1269 auxiliary power amps, 150-W/ch, pre-amp and switch array.

HEWLETT-PACKARD LaserJet 4000TN; 5siMX; and 8000DN Network Laser Printers.

DIGITAL LG-02 and LG-12 High-Speed Line Printers, w/cabinets.

Good Quantity of Desktop Computers; Network Gear; 2-Way Radio Systems; and More.

## RACKING

(1250+) 8' Sections of Structural Steel, bolt together, 42" x 25' 5-6 tier pallet rack.

RAPISTAN Warehouse Conveyor and Sorting System, 2-zone, w/(7) feeds, (2) barcode scanners, dual zone CRT displays and control panel, (5,000+) feet of 18" active roller, belt, and jog conveyor with (12) dock feeds, corners and turns, inclines, safety switches, and more.

## BATTERY CHARGERS & CHANGERS

(75+) Late Mdl. and Like New Chargers Including: GNB FERRO Chargers, HERTNER Auto 1000, and NORTHEAST 12-48V.

(2) RAYMOND Battery Ease II Battery Chargers.

## MACHINE SHOP

Including: SOUTH BEND 13" x 48" Engine Lathe; DIARCO 36" Manual Sheet Metal Shear; BRIDGEPORT Vertical Milling Machine; PEERLESS Horizontal Metal Cutting Band Saw; STAR-TRITE Vertical Metal Cutting Band Saw; RIGID Portable Pipe Threader, with cart and accessories; LINCOLN 250 Welder; Assorted Hand and Power Tools; Floor Jacks; Come-A-Longs; and Related.

## FOOD SERVICE EQUIPMENT

Including: VICTORY 4-Door Stainless Steel Reach-In Refrigerator; BRAUN 3-Burner Automatic Coffee Makers; MANITIWOK Ice Maker; RAETON 3-Door Stainless Steel Reach-In Freezer; HOBART Stainless Steel 2-Basket Electric Fryolator; GE 2-Door Stainless Steel Pizza Oven; HOBART Stainless Steel 10' Prep-Station, with (2) electric burners, over-and-under shelves, pot rack and storage drawers; (5) 4'-8" Stainless Steel Work Tables, with under-shelves; HOBART Free-Standing Stainless Steel 2-Compartment Sink, with chloritizer, food aerator drain boards and back splash; WELLS 36" Electric Grill; and More.

Good Quantity of Wood, Veneer, Laminated and Metal Executive Office Suites; Leather Executive and Side Chairs; Conference Room Furniture; Rolling Multi-Task Arm Chairs; Reception Room Furniture; Upright and Lateral Files; Office Panel Systems; Computer Work Stations; 2-Door Metal Storage Cabinets, and More.



STAND UP FORK TRUCK W/SIDESHIFT



WALK-BEHIND PALLET JACKS



2002 RAYMOND TURRET LIFT

**NO RESERVES  
NO MINIMUM  
BIDS**



## Edison, New Jersey Distribution Center 80 Distribution Boulevard Wednesday, April 30th • 10:00 A.M.

Preview: Morning of Sale • 8:00 A.M.

### FORK TRUCKS & ELECTRIC PALLET JACKS

2002 and (3) 1998 RAYMOND Mdl. SA-CSR 30-Ton Electric Turret Forklifts, 3,000-lb. cap., 250" mast, programmable controls.

1993 and 1996 RAYMOND Mdl. 537-CSR 30-Ton Electric Turret Forklifts, 3,000-lb. cap.

(2) 2001 RAYMOND Mdl. R40-C40TT Stand-Up Electric Forklifts, 251" mast, 4,000-lb. cap., w/sideshift

(2) 1997 RAYMOND Mdl. 640-C40TT Stand-Up Electric Forklifts, 251" mast, 4,000-lb. cap., w/sideshift.

(2) 1988 RAYMOND Mdl. 60-C40TT Stand-Up Electric Forklifts, 200" mast, 4,000-lb. cap., w/sideshift.

(2) 1999 RAYMOND Mdl. 60-C30TT Stand-Up Electric Forklifts, 204" mast, 3,000-lb. cap., w/sideshift.

(12) CROWN Mdl. PE3520-60 6,000-Lb. Double-Pallet Jacks.

(15) RAYMOND 6,000-Lb. Double-Pallet Jacks.

(10) RAYMOND 6,000-Lb. Single-Pallet Jacks.

(3) CROWN 60PE-S 6,000-Lb. Single-Pallet Jacks.

### WAREHOUSE EQUIPMENT

(38) Multi-Function and Crown 5,000-Lb. Hydraulic Pallet Jacks, many like new.

TENNANT Mdl. 515SS and 6200 Electric Ride on Wet Scrubbers, w/36V charger, w/ROPS.

CLARK Walk-Behind Electric Scrubber, w/wet vac.

6' Horizontal Hydraulic Compactor, w/30-yd. end-dump container.

QUALITY 4,000-Lb. Rolling Boom Style Shop and Engine Hoist.

Good Quantity of 2-Wheel MAGLINER Hand Trucks; Break Room Furniture; Microwaves; and BRAUN 3-Burner Automatic Coffee Makers.

### IT & COMMUNICATIONS EQUIPMENT

IBM AS400e Series 7XX Server, w/1GB RAM, 21GB DASD, tape drive, internal MLR1 drive, CD drive, 400 Ver. 4 Rel. 4 OS, under IBM warranty and maintenance.

NORTEL Meridian 3 Chassis Digital Telephone System, w/(8) universal trunk cards, (2) analog M/WLC cards, (9) digital LC cards, system core card, 1.5 MB DTI/PRI card.

### RACKING

(785) 8' Sections of Structural Steel, bolt together, 42" x 20' 3-4 tier pallet rack.

(85) 8' Sections of Structural Steel, bolt together, 96" x 20' 3-4 tier push back pallet rack.

### BATTERY CHARGERS & CHANGERS

(50+) Late Mdl. and Like New Chargers Including: GNB FERRO Chargers; EXIDE System 3000; and OLYMPIAN Scout 24-48V.

(2) RAYMOND Battery Ease II Battery Chargers.

### OFFICE EQUIPMENT & FURNITURE

LUCENT Definity Digital Telephone System, w/Avaya hand sets and administrator panel, ADC LTU remote terminal, w/battery backup.

PHILLIPS Mdl. TLC-3960/60 Time-Lapse Video Recorder, w/Phillips (16) channel video multiplex switcher and 19" quad color monitor.

Good Quantity of Wood, Veneer, Laminate and Metal Executive Office Suites; Leather Executive and Side Chairs; Conference Room Furniture; Rolling Multitask Arm Chairs; Reception Room Furniture; Upright and Lateral Files; 2-Door Metal Storage Cabinets; and More.

**NO RESERVES • NO MINIMUM BIDS**



PALLET RACKING



AMERICAN LINCOLN FLOOR SCRUBBER



CUMMINS DIESEL BACKUP GENERATOR

For more information, log on to [www.crgauction.com](http://www.crgauction.com) or [www.rabin.com](http://www.rabin.com)

# PLUS MULTIPLE LOCATIONS THROUGHOUT CALIFORNIA, COLORADO, MICHIGAN & TEXAS

## Thursday, May 1st–Friday, May 9th

### WARREN, MICHIGAN • MAY 1st (48 TOTAL)

Rabin Worldwide – MI Lic. No. 03-03

#### (28) TRAILERS

- (19) 1997 TRAILMOBILE 48', (10) Carrier, (9) Thermo King T/A Reefers, rollup door with rail gate, 102"W x 13'H, 65,000-lb. GVWR.
- 1995 UTILITY 48' Thermo King T/A Reefer, rollup door with rail gate, 96"W x 13'H, 65,000-lb. GVWR.
- 1997 TRAILMOBILE 45' Carrier T/A Reefer, rollup door with rail gate, 102"W x 13'H, 65,000-lb. GVWR.
- 1997 TRAILMOBILE 42' Thermo King T/A Reefer, rollup door with rail gate, 102"W x 13'H, 65,000-lb. GVWR.
- 1997 KIDRON 28' Carrier S/A Reefer, rollup door with rail gate, 102"W x 13'H, 40,000-lb. GVWR.
- (5) 1996 TRAILMOBILE 48' Thermo King T/A Reefers, rollup door with rail gate, 102"W x 13'H, 65,000-lb. GVWR.

#### (20) TRACTORS

- (10) 1997 VOLVO Mdl. WG64T T/A Day Cabs, Detroit Series 60, 325–374 hp.
- (2) 1997 FREIGHTLINER Mdl. D12064ST T/A Sleepers, Detroit Series 60 12.7L, 408–495 hp.
- (8) 1996 FREIGHTLINER Mdl. FLD12064ST T/A Sleepers, Detroit Series 60 12.7L, 408–495 hp.

### AURORA, COLORADO • MAY 6th (22 TOTAL)

#### (16) TRAILERS

- (3) 1997 TRAILMOBILE 48' Thermo King T/A Reefers, rollup door with rail gate, 102"W x 13'H, 65,000-lb. GVWR.
- (3) 1996 TRAILMOBILE 48' Thermo King T/A Reefers, rollup door with rail gate, 102"W x 13'H, 65,000-lb. GVWR.
- (4) 1997 UTILITY 48' Thermo King T/A Reefers, rollup door with rail gate, 102"W x 13'H, 65,000-lb. GVWR.
- (3) 1997 UTILITY 45' Thermo King T/A Reefers, rollup door with rail gate, 102"W x 13'H, 65,000-lb. GVWR.
- (3) 1997 KIDRON 28' (2) Carrier, Thermo King Reefer S/As, rollup door with rail gate, 102"W x 13'H, 40,000-lb. GVWR.

#### (6) TRACTORS

- (3) 1997 VOLVO Mdl. WG64T T/A Day Cabs, Detroit Series 60, 325–374 hp.
- (2) 1997 FREIGHTLINER Mdl. FLD12064ST T/A Sleepers, Detroit Series 60 12.7L, 408–495 hp.
- 2001 INTERNATIONAL Mdl. 4900 Straight Truck, 22', International/Detroit 466.

### FORT WORTH, TEXAS • MAY 7th (17 TOTAL)

R. Reese – TX Lic. No. 8329

#### (10) TRAILERS

- (3) 1997 TRAILMOBILE 48' Thermo-King T/A Reefers, rollup door with rail gate, 96"W x 13'6"H, 65,000-lb. GVWR.
- (4) 1997 UTILITY 48' Thermo-King T/A Reefers, rollup door with rail gate, 96"W x 13'6"H, 65,000-lb. GVWR.
- 1997 TRAILMOBILE 42' Thermo-King T/A Reefer, rollup door with rail gate, 96"W x 13'6"H, 65,000-lb. GVWR.
- 1997 UTILITY 28' Thermo-King T/A Reefer, rollup door with rail gate, 96"W x 13'6"H, 40,000-lb. GVWR.
- 1996 TRAILMOBILE 28' Thermo-King T/A Reefer, rollup door with rail gate, 96"W x 13'6"H, 40,000-lb. GVWR.

#### (7) TRACTORS

- (3) 1997 VOLVO Mdl. WG64T T/A Day Cabs, Detroit Series 60, 325–374 hp.
- (2) 1996 VOLVO Mdl. WG64T T/A Day Cabs, Detroit Series 60, 325–374 hp.
- (2) 1997 FREIGHTLINER Mdl. FLD120 T/A Sleepers, Detroit Series 60 12.7L, 408–495 hp.

### FONTANA, CALIFORNIA • MAY 8th (47 TOTAL)

R. Reese – CA Bond No. 30192785-1

#### (22) TRAILERS

- (3) 1997 UTILITY 48' Thermo King T/A Reefers, rollup door with rail gate, 102"W x 12'6"H, 65,000-lb. GVWR.
- (5) 1997 TRAILMOBILE 42' Thermo King (4 with Carrier Units) T/A Reefer, rollup door with rail gate, 102"W x 12'6"H, 65,000-lb. GVWR.
- (3) 1996 UTILITY 42' Carrier Reefer T/As, rollup door with rail gate, 102"W x 12'6"H, (1 is 96"W x 13'6"H), 65,000-lb. GVWR.
- (7) 1997 TRAILMOBILES 48' Thermo-King T/A Reefer, rollup door with rail gate, 102" x 13'.
- (3) 1994 UTILITY 35' Carrier T/A Reefers, rollup door with rail gate, 96"W x 13'6"H, 65,000-lb. GVWR.
- 1993 UTILITY 46' Carrier T/A Reefer, rollup door with rail gate, 96"W x 13'6"H, 65,000-lb. GVWR.

#### (25) TRACTORS

- (19) 1997 VOLVO Mdl. WG64T T/A Day Cabs, Detroit Series 60, 325–374 hp.
- (5) 1997 FREIGHTLINER Mdl. D12064ST T/A Sleepers, Detroit Series 60, 325-374 hp.
- 1996 VOLVO Mdl. WG64T T/A Day Cab, Detroit Series 60, 325–374 hp.

### MILPITAS, CALIFORNIA • MAY 9th (27 TOTAL)

R. Reese – CA Bond No. 30192785-1

#### (20) TRAILERS

- (3) 2000 TRAILMOBILE 46' Thermo King T/A, rollup door with rail gate, 102"W x 12'8"H, 65,000-lb. GVWR.
- (5) 1997 UTILITY 43' Thermo King T/As, rollup door with rail gate 102"W x 12'8" H, 65,000-lb. GVWR.
- 1997 TRAILMOBILE 28' Thermo King S/A, rollup door with rail gate 102"W x 12'H, 65,000-lb. GVWR.
- (2) 1996 UTILITY 40' Thermo King with Carrier Unit, T/As, rollup door with rail gate, 96"W x 13'5" H, 65,000-lb. GVWR.
- 1994 UTILITY 28' Thermo King S/A, rollup door with rail gate, 96"W x 13'5"H, 40,000-lb. GVWR.
- (7) 1993 UTILITY 46' Thermo King T/As, rollup door with rail gate, 96"W x 13'5"H, 65,000-lb. GVWR.
- 1993 UTILITY 28' Thermo King, rollup door with rail gate, 96"W x 13'5"H, 40,000-lb. GVWR.

#### (7) TRACTORS

- (3) 1997 VOLVO Mdl. WG64TT/A Day Cabs, Detroit Series 60, 325-374 hp.
- (4) 1997 FREIGHTLINER Mdl. FLD120 T/A Sleeper, Detroit Series 60, 12.7L, 408–495 hp.

## AVAILABLE FOR IMMEDIATE SALE

### OKLAHOMA CITY, OKLAHOMA

1997 FREIGHTLINER Mdl. FLD12064ST T/A Sleeper, Detroit Series 60 12.7L, 408–495 hp.

### WILSONVILLE, OREGON (11 TOTAL)

#### (6) TRAILERS

- (3) 1997 UTILITY 48' Thermo King T/A Reefer, rollup door with rail gate, 102"W x 13' H, 65,000-lb. GVWR.
- (2) 1997 TRAILMOBILES 45' Carrier T/A Reefer, rollup door with rail gate, 102"W x 12'8" H, 65,000-lb. GVWR.
- 1996 TRAILMOBILE 40' Thermo King T/A Reefer, rollup door with rail gate, 102"W x 13' H, 65,000-lb. GVWR.

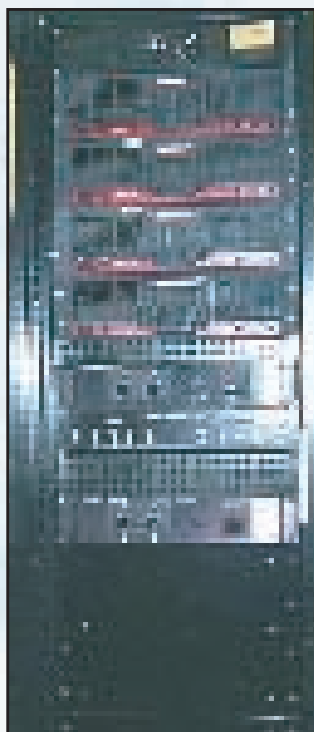
#### (5) TRACTORS

- 1997 VOLVO Mdl. WG64T T/A Day Cab, Detroit Series 60, 325–374 hp.
- 1997 FREIGHTLINER Mdl. D12064ST T/A Sleeper, Detroit Series 60 12.7L, 408-495 hp.
- (2) 1996 VOLVO Mdl. WG64TT/A Day Cabs, Detroit Series 60, 325–374 hp.
- 1996 FREIGHTLINER Mdl. FDL12064ST T/A Sleeper, Detroit Series 60 12.7L, 408-495 hp.

# HUGE NATIONWIDE ABSOLUTE AUCTION



MERIDIAN PHONE SYSTEM



PA PAGING SYSTEM

**350+ Late Model Well Maintained  
Highway Tractors, Straight Trucks & Reefer Trailers**

---

**(2) Fully Equipped Distribution Centers**



EXECUTIVE OFFICE SUITE



CONFERENCE ROOM FURNITURE



AS400E SERVER

## AUCTION INFORMATION

### VIEWING

Inspection for Savage, Maryland will be April 28th from 9:00 A.M. to 4:00 P.M. or by appointment. All other inspections will be morning of sale, beginning at 8:00 a.m.

### DIRECTIONS TO SAVAGE, MARYLAND

**From BWI Airport:** Take I-95 to Route 295 South. Follow approximately 15 miles to Route 32 West, take exit 11 (Dorsey Run Road). Turn left off the ramp. Go 1/4 mile and turn right on Junction Road. Take immediate right onto Corridor Road, go approximately 3/4 miles to Bollman Place, turn left. Take first driveway on right. Follow signs to Marriott parking lot.

### DIRECTIONS TO EDISON, NEW JERSEY

**From New Jersey Turnpike:** Take the Edison TWP./Metuchen Exit No. 10 (Route 514W). Continue on Woodbridge Avenue approximately 3 miles, go left on Mill Road. (Pass Middlesex County College.) Go approximately 1 mile on Mill Road, turn right on Distribution Boulevard. Follow signs.

### ACCOMMODATIONS:

- Comfort Inn . . . . . 410-880-3133  
8828 Washington Blvd. Jessup, Maryland
- Fairfield Inn by Marriott . . . . . 410-799-1500  
7300 Crestmount Rd, Jessup, Maryland
- Holiday Inn Columbia . . . . . 410-799-7500  
7900 Washington Blvd, Jessup, Maryland

### AUTO RENTAL AGENCIES:

All Major Rental Agencies are located at the airport

### TERMS OF SALE:

To be sold in accordance with Capital Recovery Group's and Rabin Worldwides "Terms of Sale" as published on our websites and in the auction catalog.

Items listed in the brochure are subject to prior sale.

A 10% Buyer's Premium will be charged on all items sold.

### FOR MORE INFORMATION:

#### Capital Recovery Group

1654 King Street  
Enfield, CT 06117  
Tel: 1-800-300-6852  
1-860-623-9060  
Fax: 1-860-623-9160  
Email: info@crgauction.com  
www.crgauction.com

#### Rabin Worldwide

298 San Bruno Ave.  
San Francisco, CA 94103  
Tel: 1-800-421-2144  
1-415-522-5700  
Fax: 1-415-522-5701  
Email: details@rabin.com  
www.rabin.com

**Capital Recovery Group**  
1654 King Street  
Enfield, Connecticut 06082  
(800) 300-6852  
[www.crgauction.com](http://www.crgauction.com)



# HUGE NATIONWIDE ABSOLUTE AUCTION

Trucks, Trailers,  
Straight Trucks &  
Distribution Centers

## First Class Mail

Postmaster: Dated Material  
Please Deliver Promptly

Presorted  
First Class Mail  
U.S. Postage  
PAID  
Eugene, Oregon  
Permit No. 305

# HUGE NATIONWIDE ABSOLUTE AUCTION

Trucks, Trailers, Straight Trucks & Distribution Centers  
**NO RESERVES • NO MINIMUM BIDS**



A COMPLETE LISTING OF PHOTOS &  
AUCTION ITEMS CAN BE VIEWED AT:  
[www.crgauction.com](http://www.crgauction.com) or [www.rabin.com](http://www.rabin.com)

**Savage, Maryland**  
**Distribution Center**  
Tuesday, April 29th • 10:00 A.M.

**Edison, New Jersey**  
**Distribution Center**  
Wednesday, April 30th • 10:00 A.M.

**PLUS MULTIPLE LOCATIONS  
THROUGHOUT CALIFORNIA,  
COLORADO, MICHIGAN & TEXAS**  
Thursday, May 1st–Friday, May 9th



2002  
INTERNATIONAL  
24' STRAIGHT  
TRUCK