

\$600,000.00 New Wholesale Club Retail Inventory

PUBLIC AUCTION

Mitch's Place • 227 Main Street, New Britain, Connecticut 06051

**ALL MERCHANDISE
WILL BE SOLD TO
THE HIGHEST BIDDER**

**Tuesday, August 10th
Starting at 11:00 A.M.**

**Inspection: Morning of Sale
Beginning at 8:00 A.M.**

Highlights

- Consumer Electronics
- Sporting Goods
- Appliances
- Housewares
- Home & Garden
- Clothing
- Toys & Games
- HBA
- Office Supplies
- Home Accents & Decorative Arts
- Hardware



- NEW MERCHANDISE
- NATIONAL BRANDS
- 1,000s OF ITEMS
- Overstocks
- Slightly Damaged Boxes
- Returns
- Manufacturers' Seconds



CAPITAL RECOVERY GROUP, LLC

Auction Specialists • Appraisal Experts • Online or On-site
1654 King Street, Enfield, Connecticut 06082
(860) 623-9060 • (800) 300-6852 • Fax: (860) 623-9160
William J. Firestone • MA License No. 232

www.crgauction.com

For Additional Information Please Visit Us at www.crgauction.com
or Call Toll Free (800) 300-6852



\$600,000.00 New Wholesale Club Retail Inventory

PUBLIC AUCTION

Mitch's Place • 227 Main Street, New Britain, Connecticut 06051

**ALL MERCHANDISE
WILL BE SOLD TO
THE HIGHEST BIDDER**

**Tuesday, August 10
Starting at 11:00 A.M.**

**Inspection: Morning of Sale
Beginning at 8:00 A.M.**

Highlights

- Consumer Electronics
- Sporting Goods
- Appliances
- Housewares
- Home & Garden
- Clothing ■ Toys & Games
- HBA ■ Office Supplies
- Home Accents & Decorative Arts
- Hardware

■ NEW MERCHANDISE ■ NATIONAL BRANDS ■ 1,000s OF ITEMS

- Overstocks
- Slightly Damaged Boxes
- Returns
- Manufacturers' Seconds



CAPITAL RECOVERY GROUP

Visit Our Website at www.crgauktion.com for Details

Consumer Electronics Including SONY, PANASONIC, JVC, SHARP, TOSHIBA, and SAMSUNG DVD Players; Televisions; Digital Cameras; Camcorders; Surround Sound; Portable Stereo Systems; VCRs.

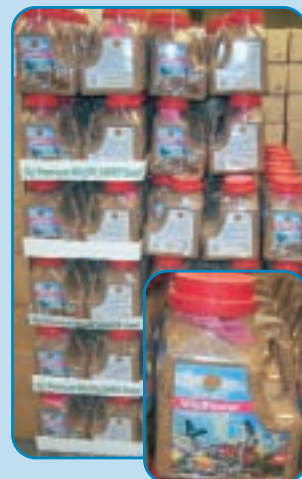
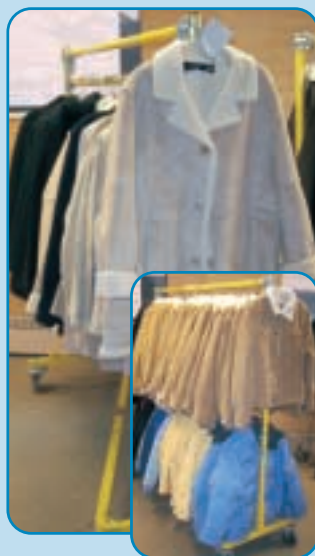
Sporting Goods Including BOWFLEX, CARDIO GLIDE and WEIDER Exercise Systems; ACCUTRAINER Golf Training Systems; Golf Clubs; Bicycles; Skateboards; Helmets and Pads; Hockey Equipment; Parts and Accessories; Soccer Gear; Swimming Pools and Supplies; Ping Pong Tables; Sports Clothing.

Home and Garden Supplies Including Canvas-Top Gazebos; Outdoor Lighting; Knock-Down Furniture; RUBBERMAID Folding Picnic Sets; Patio Supplies; Hoses and Hose Reels; Car Care Products; Flower and Bird Seeds; Cleaning Products; Paper Goods and Party Supplies; Decorative Garden Edging; Brass Switch and Register Plates.

Tools and Hardware Including RYOBI, HOMELITE, STANLEY, and WAGNER Gas-Powered Snowblowers; Weed Whackers; Backpack Blowers; Power Washers; Power Painting Equipment; DEVILBISS and COLEMAN Portable Compressors; STANLEY Pre-Hung, patio, sliding door and screen systems; Case Lots of Electrical Supplies; Fasteners; Light Bulbs; Oils and Lubricants; Spray Paints; Brushes; Portable Rolling Floor Jacks and Auto Lifts; Hand Tools.

Commercial Equipment Including Hydraulic Pallet Jacks; Industrial Floor Fans; Quartz Warehouse lighting; L-Bar Sealer, with heat tunnel; Metal Platform Carts; Two-Wheelers.

Housewares and Appliances Including MAGIC CHEF, PANASONIC, and SHARP Microwaves; KITCHENAID Mixers; SINGER Sewing Machines; PUR, BRITA, and WATER PIC Filter Systems; Shower Heads and Supplies; PANASONIC Window Fans; Humidifiers and Vaporizers; Bottled Water Machines; Air Conditioners; Lamps and Lighting Fixtures; Kitchen Supplies and Cookware; China; Tableware; Barware.



Clothing Including NAUTICA, FILA and LEVI Outerware; Sweats; Jeans; Suede and Fleece Jackets; 100% MERINO Wool Bench Warmers and Pea Coats; Ski Parkas; MAJOR LEAGUE BASEBALL and NFL Licensed Hats; 100% MERINO Wool Sweaters; KIRKLAND (HANES) Women's Hosiery, and Children's Clothing.

Office Supplies Including HON File Cabinets; LEXMARK, PANASONIC, and EPSON color ink jet printers and supplies; Case Lots of Copier and Printer Paper; KIRKLAND Leather Personal Organizers and Notebooks; Case Lots of Pens, pencils, markers, tapes, and adhesives; File Folders; Staples and Staplers; File Boxes and Related Supplies.

HBA Including Personal Grooming Products; Skin and Hair Care; Nail Polish; Teen Products; Baby Care; OTC Pharmaceutical Products; Vitamins; Nutrition Products; Diet Supplements.

POLAROID and KODAK Instant Film and Disposable Cameras; Case Lots of 35mm Film, batteries, and accessories with point-of-sale displays.

Massive Assortment of Toys and Games; Home Décor; Collectibles; Figurines; Picture Frames; Framed Art; Photo Albums in Case Lots.

Capital Recovery Group
1654 King Street
Enfield, Connecticut 06082
www.crgauction.com

Presorted
First Class Mail
U.S. Postage
PAID
Eugene, Oregon
Permit No. 305

PUBLIC AUCTION

ALL MERCHANDISE WILL BE
SOLD TO THE HIGHEST BIDDER

Tuesday, August 10th
Starting at 11:00 A.M.

Inspection: Morning of Sale, Beginning at 8:00 A.M.

Highlights

- Consumer Electronics
- Sporting Goods
- Appliances
- Housewares
- Home & Garden
- Clothing
- Toys & Games
- HBA
- Office Supplies
- Home Accents & Decorative Arts
- Hardware

PUBLIC AUCTION

\$600,000.00
**New Wholesale Club
Retail Inventory**

ALL MERCHANDISE
WILL BE SOLD
TO THE HIGHEST BIDDER
New Britain, Connecticut



IP-4151682

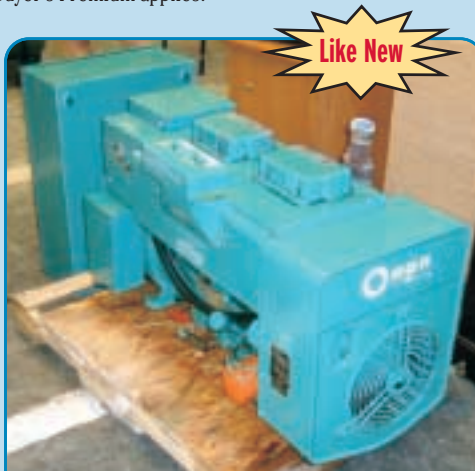
AUCTION INFORMATION

- Tuesday, August 10th, at 11:00 A.M.
- Inspection: Morning of Sale Beginning at 8:00 A.M.

TERMS OF SALE

All equipment sold "AS IS/WHERE IS." 25% deposit is required at the time of sale by cash, certified or bank check or bank wire transfer. Personal or company checks accepted only if accompanied with a bank letter guaranteeing payment. (Example of a bank letter of guarantee: This bank unconditionally guarantees payment to Capital Recovery Group from (name of customer) drawn on account # _____ up to the amount of \$ _____ for purchase at the sale on Tuesday, August 10th, 2004.)

No purchases removed until complete settlement is made. Other terms to be announced at time of sale. 10% Buyer's Premium applies.



**ONAN 15kW 3-PHASE 10kW 1-PHASE
NATURAL GAS PORTABLE GENERATOR**

IMPORTANT NOTICE

The information described in this brochure is correct to the best of our knowledge, but we cannot guarantee same. It is for this reason that buyers should avail themselves of the opportunity for inspection prior to the sale.

DIRECTIONS

From Hartford: Take I-84 West towards Waterbury to Exit 39A (which is CT-9 South exit), towards New Britain. Follow approximately 4 1/2 miles, take the 28/28A/CT-72 West exit towards downtown New Britain. Follow approximately 1/2 mile, turn right on East Main Street, left on Main Street. Look for auction signs.