

COMPLETE SYSTEMS & SUPPORT SERVICES FOR A 1.25 MILLION SQ. FT. BIOMEDICAL RESEARCH CAMPUS

5 Research Pkwy.,
Wallingford, CT 06492

DATE: Online Only Bidding Closes Thursday, February 28th Beginning at 10:00 A.M.

INSPECTION:
Wednesday, February 27th
from 9:00 A.M. – 4:00 P.M.

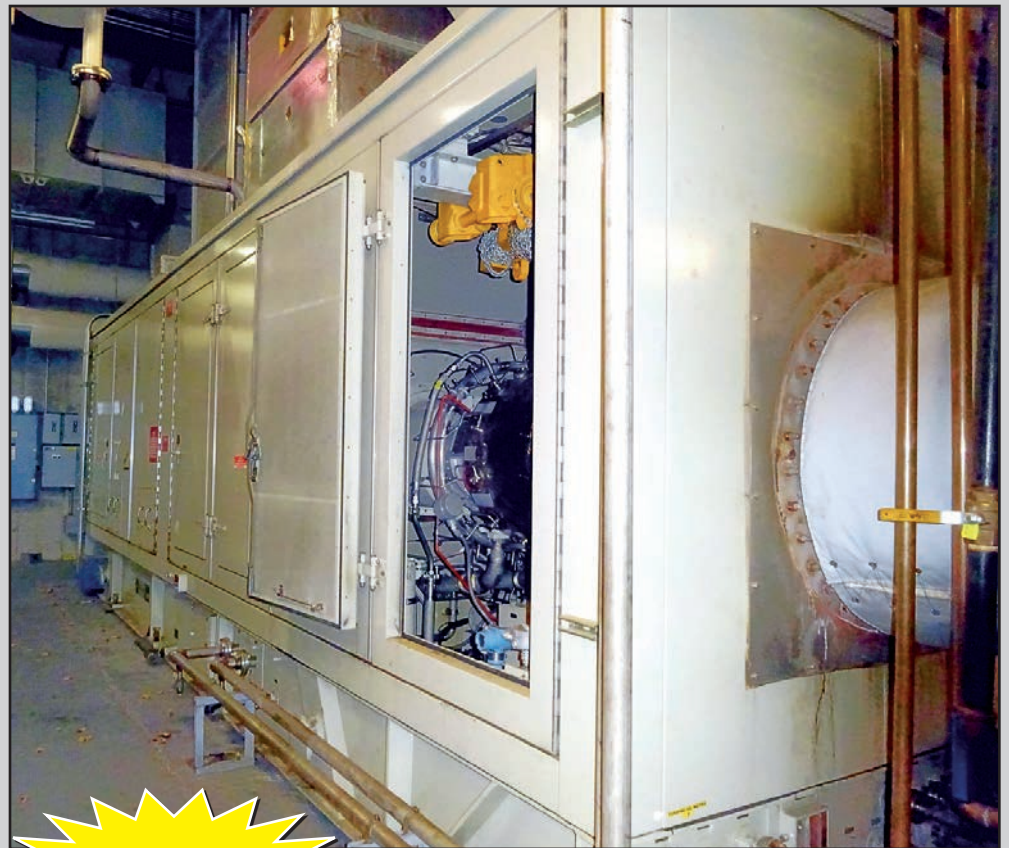
HIGHLIGHTS:

- 4.8 MW Gas Turbine Cogen Plant (Rebuilt 2017)
- (3) Diesel Backup Generators with Switchgear
- 2014 Steam Turbine Driven York 2,500-Ton Chiller
- Late-Model York 500–1,200-Ton Chillers
- (6) 2014 BAC Condensing Towers
- Cleaver Brooks Water Tube High Pressure Boilers
- (6) Ingersoll Rand & Atlas Copco 65–100 HP Rotary Screw Air Compressors
- (75+) Switchgear Distribution Panels and Substations with Assorted Breakers
- Vacuum Pump Skids with PLC Controls
- Water DI & RO Systems
- MCCs, VSDs, and AC Drive Controls
- Spare Motors, Parts, Supplies & Stores

This Auction is Proudly in Conjunction With:



CRG AUCTION



TAURUS 4.8 MW GAS TURBINE

ONLINE BIDDING ONLY!



(6) NEW BAC COOLING TOWERS

For complete catalog
crgllc.com
1.800.300.6852



BUSCH VACUUM PUMP SKID



SAMPLE SWITCH GEAR

BID ONLINE AT BidSpotter.com

Auction Specialists • Appraisal Experts • Online or On-site
1654 King Street, Enfield, Connecticut 06082
(860) 623-9060 • (800) 300-6852 • Fax: (860) 623-9160
Bill Firestone, President